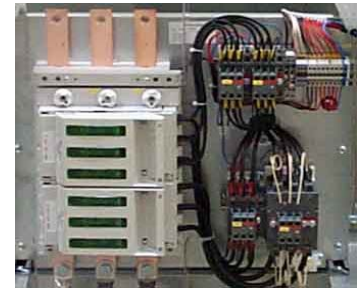


Power Factor Correction Modules

for cabinets 600 and 800/850 mm in width

power factor correction modules without reactor protection,
for installation in switch cabinets 600 or 800/850 mm in width

- PCB-free MKP-type capacitors
- integrated busbar system 630A
- group protection using HRC load breaker
- capacitor contactors with protective resistors to limit inrush current
- no additional wiring is necessary thanks to the plug-type design of the control system wiring
- delivery includes installation rails, busbar connectors and cover for protection against contact



Power factor correction modules for switch cabinets 600 mm in width

Total power KVAR	Step sizes	Type	Dimensions width x height x front-to-back (in mm)
10	10	M6-1S10	490x350x360
10	5+5	M6-2S5	490x350x360
12.5	12.5	M6-1S12,5	490x350x360
15	15	M6-1S15	490x350x360
15	5+10	M6-2S5/10	490x350x360
20	20	M6-1S20	490x350x360
20	10+10	M6-2S20	490x350x360
25	25	M6-1S25	490x350x360
25	12.5+12.5	M6-2S12,5	490x350x360
25	5+10+10	M6-3S5/10/10	490x350x360
30	30	M6-1S30	490x350x360
30	15+15	M6-2S15	490x350x360
30	10+20	M6-2S10/20	490x350x360
30	10+10+10	M6-3S10	490x350x360
40	40	M6-1S40	490x350x360
40	20+20	M6-2S20	490x350x360
40	10+10+10+10	M6-4S10	490x350x360
50	50	M6-1S50	490x350x360
50	25+25	M6-2S25	490x350x360
60	60	M6-1S60	490x350x360
60	30+30	M6-2S30	490x350x360
60	10+20+30	M6-3S10/20/30	490x350x360
60	20+20+20	M6-3S20	490x350x360
75	25+25+25	M6-3S25	490x350x360
80	20+20+20+20	M6-4S20	490x350x360
100	25+25+25+25	M6-4S25	490x350x360
125	25+50+50	M6-5S25	490x350x360
150	25+25+50+50	M6-6S25	490x350x360

Power factor correction modules for switch cabinets 800/850 mm in width

Total power KVAR	Step sizes	Type	width=800 mm	width=850 mm
			Dimensions width x height x front-to-back (in mm)	
10	10	M8-1S10	680x350x360	740x350x360
12.5	12.5	M8-1S12,5	680x350x360	740x350x360
15	15	M8-1S15	680x350x360	740x350x360
20	20	M8-1S20	680x350x360	740x350x360
20	10+10	M8-2S10	680x350x360	740x350x360
25	25	M8-1S25	680x350x360	740x350x360
25	12.5+12.5	M8-2S12,5	680x350x360	740x350x360
30	30	M8-1S30	680x350x360	740x350x360
30	15+15	M8-2S15	680x350x360	740x350x360
30	10+10+10	M8-3S10	680x350x360	740x350x360
40	40	M8-1S40	680x350x360	740x350x360
40	20+20	M8-2S20	680x350x360	740x350x360
40	10+10+10+10	M8-4S10	680x350x360	740x350x360
50	50	M8-1S50	680x350x360	740x350x360
50	25+25	M8-2S25	680x350x360	740x350x360
50	10+20+20	M8-3S10/20/20	680x350x360	740x350x360
50	12.5+12.5+12.5+12.5	M8-4S12,5	680x350x360	740x350x360
50	12.5+12.5+25	M8-3S12,5/12,5/25	680x350x360	740x350x360
60	60	M8-1S60	680x350x360	740x350x360
60	30+30	M8-2S30	680x350x360	740x350x360
60	15+15+15+15	M8-4S15	680x350x360	740x350x360
60	20+20+20	M8-3S20	680x350x360	740x350x360
75	25+25+25	M8-3S25	680x350x360	740x350x360
75	25+50	M8-2S25/50	680x350x360	740x350x360
80	80	M8-1S80	680x350x360	740x350x360
80	40+40	M8-2S40	680x350x360	740x350x360
80	20+20+20+20	M8-4S20	680x350x360	740x350x360
100	25+25+25+25	M8-4S25	680x350x360	740x350x360
100	25+25+50	M8-3S25/25/50	680x350x360	740x350x360
120	40+40+40	M8-3S40	680x350x360	740x350x360
120	30+30+30+30	M8-4S30	680x350x360	740x350x360
125	25+50+50	M8-3S25/50/50	680x350x360	740x350x360
150	50+50+50	M8-3S50	680x350x360	740x350x360
160	40+40+40+40	M8-4S40	680x350x360	740x350x360
180	60+60+60	M8-3S60	680x350x360	740x350x360
200	50+50+50+50	M8-4S50	680x350x360	740x350x360
200	40+40+40+40+40	M8-5S40	680x350x360	740x350x360